



THE HAMBURG

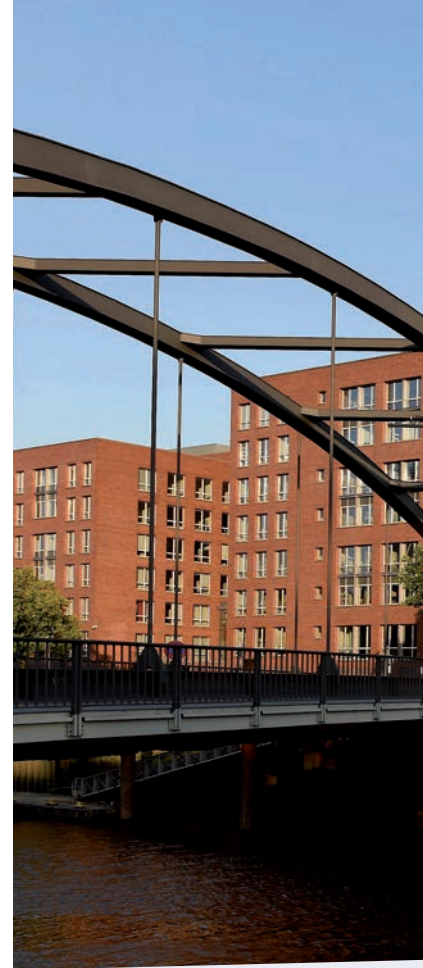
INNOVATION PARKS

HOTSPOTS FOR INDUSTRY,

SCIENCE AND START-UPS

INNOVATION BEGINS WITH IDEAS. YOUR IDEAS!

But ideas need space to develop and grow. You'll find such space in our city, Hamburg. A city where people's sights have always been set on the horizon and beyond but at the same time a city where clear words and solid relationships make for essential grounding – so that ideas can become reality. We don't issue building permits for castles in the air. To make our visions reality we rather rely on careful planning coupled with comprehensive advisory services and support. And the results speak for themselves. If this is what you're looking for, Hamburg is exactly the right place for you.



Hamburg offers you ...

... Quick contact- making

- The Startup-Unit as port of call for new business start-ups www.hamburg-invest.com
- Hamburg Innovation (HI) – the knowledge and technology transfer institute of Hamburg's universities www.hamburginnovation.de
- The Innovation Contact Office (IKS) as a hub for networking and cooperation between science and industry www.iks-hamburg.de
- The Hamburg Cluster www.hamburg.de/wirtschaft/clusterpolitik
- Plus many other innovative people and projects – find them at www.future.hamburg

... Great networking

Networking across all the key research and development issues through managed cluster organisations, theme-oriented innovation parks, and across-the-board network alliances.

... Hanseatic virtues

A superb climate of innovation thanks to typical Hanseatic virtues like reliability, perseverance, willingness to take risks and a decidedly cosmopolitan outlook.



... A first-class infrastructure

- Theme-oriented networked innovation parks with scientific anchor institutions
- Numerous private accelerators, hubs and co-working spaces
- An exceptional density of excellent universities
- A host of renowned private research establishments
- A strong economy: an innovative industrial core with international companies
- Needs-oriented contact and transfer assistance for students, business start-ups, researchers and enterprise

... The essential capital

The Hamburgische Investitions- und Förderbank (IFB) offers a range of attractive innovation development programmes with grants, venture capital and loans for start-ups and innovative companies including professional advisory services.

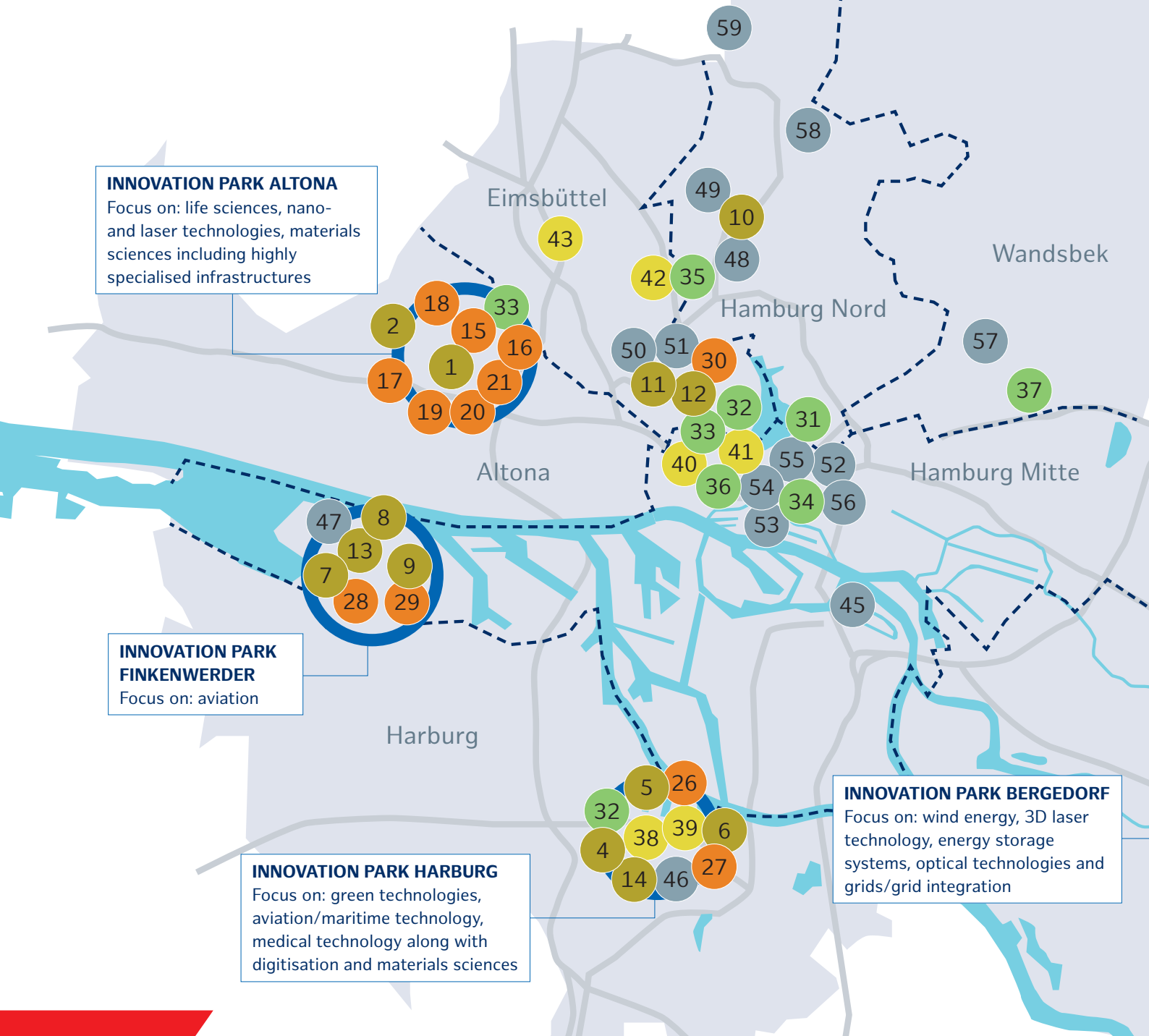
www.ifbhh.de/innovation

... Four theme-oriented innovation parks and high dynamics

- They make a major contribution to the development and innovative power of Hamburg as a place for science and industry.
- They are a scientific institute, technology centre, and place for innovative projects rolled into one. Thus they can facilitate research and development-related business start-ups, accelerate the transfer of technology and strengthen the power of innovation.
- They tackle research and development issues that are important for Hamburg, creating synergies and excellence through value chains and thus ensuring competitiveness.
- They are networked not just among themselves but with the whole of Hamburg's innovation landscape.
- Through the collaboration between science and industry they promote, they connect up forward-looking research and development with actual industrial practice.
- They are enriched by numerous privately run initiatives and centres.

HAMBURG'S INNOVATION ECOSYSTEM

This is where your innovations get all the space they deserve. Hamburg's innovation parks offer you ample free space for your innovative projects combined with a first-class infrastructure. Centrally located incubators and technology centres create neighbourhoods of exchange, networking and transfer between science and industry while locally based innovation pilots support networking and cooperation in the parks. And all this unfolds against the backdrop of a climate conducive to investment and policy-making that promotes innovation.





INCUBATORS, TECHNOLOGY CENTRES, ACCELERATORS (A SELECTION):

- 1 DESY Innovation Centre (in planning)
- 2 Technology Center Vorhornweg (in planning)
- 3 Technology Center Curslackner N. D. (in planning)
- 4 Innovation Campus Green Technologies (ICGT)
- 5 hit-Technopark
- 6 Hamburg Innovation Port (in planning)
- 7 Technology Center Hamburg-Finkenwerder (THF)
- 8 Airbus Technology Parks (ATP 1 + ATP 2)
- 9 Airbus BizLab
- 10 Health Innovation Port
- 11 next media accelerator
- 12 betahaus Hamburg
- 13 Center of Applied Aeronautical Research (ZAL TechCenter)
- 14 Technology Center Schlachthofstraße (in planning)



RESEARCH INSTITUTES (A SELECTION):

- 15 German Electron Synchrotron DESY (anchor institution)
- 16 Centre for Structural Systems Biology (CSSB)
- 17 European X-Ray Free-Electron Laser Facility (XFEL)
- 18 Fraunhofer IME ScreeningPort (IME-SP)
- 19 European Molecular Biology Laboratory (EMBL)
- 20 Center for Free-Electron Laser Science (CFEL)
- 21 Max Planck Institute for the Structure and Dynamics of Matter (MPSD)
- 22 Energy Campus of the University for Applied Sciences
- 23 Fraunhofer Institute for Additive Production Technologies IAPT (formerly Laser Zentrum Nord)
- 24 Testing Facility of the Fraunhofer Institute for Wind Energy Systems IWES (under construction)
- 25 Application Center. Power Electronics for Regenerative Energy Systems of Fraunhofer ISIT (in planning)
- 26 Fraunhofer Center for Maritime Logistics and Services CML
- 27 DLR-TUHH Institute of Air Transportation Systems
- 28 DLR Institute for Maintenance, Repair and Overhaul
- 29 DLR Institute of System Architectures in Aeronautics
- 30 Fraunhofer Institute for Applied Polymer Research IAP (formerly CAN)



EXCELLENT UNIVERSITIES (A SELECTION):

- 31 Hamburg University of Applied Sciences (HAW) (anchor institution)
- 32 Hamburg University of Technology (TUHH) (anchor institution)
- 33 Universität Hamburg (UHH)
- 34 HafenCity Universität Hamburg (HCU)
- 35 Hamburg-Eppendorf University Clinic (UKE)
- 36 Hamburg School of Business Administration (HSBA)
- 37 Helmut-Schmidt-Universität (HSU)



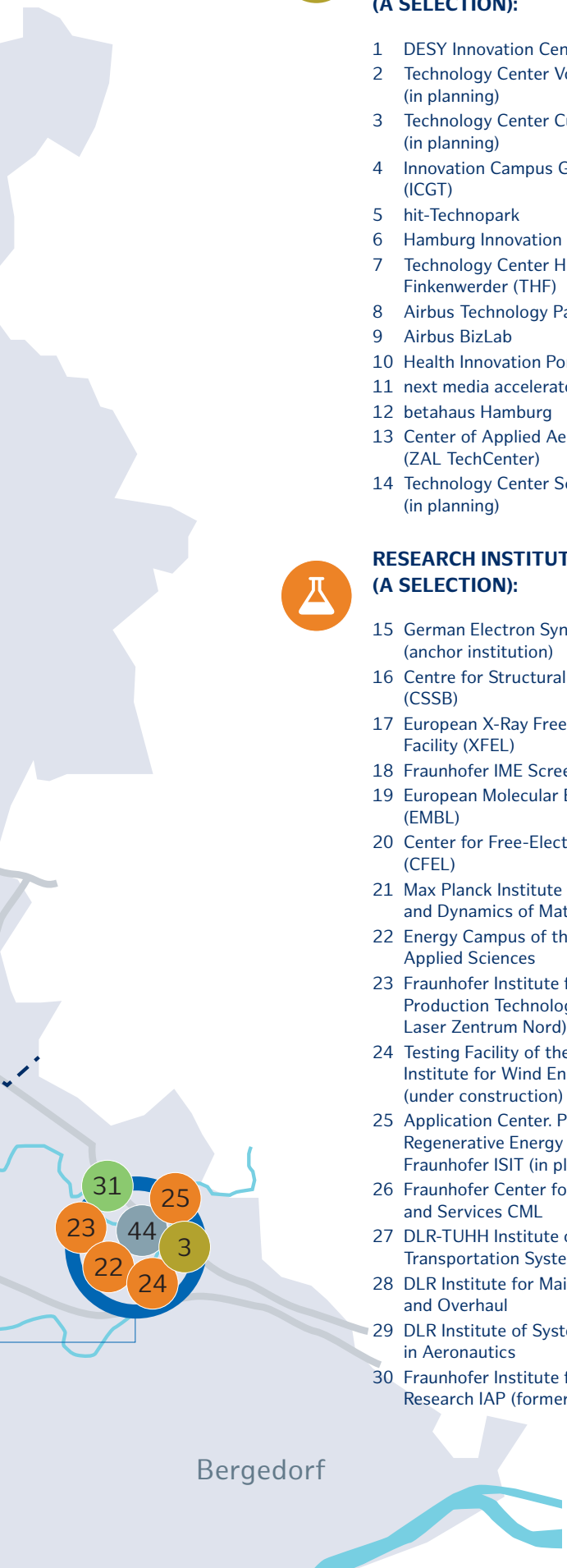
TRANSFER ESTABLISHMENTS (A SELECTION):

- 38 TUTECH Innovation GmbH
- 39 Hamburg Innovation GmbH (HI)
- 40 Innovation Contact Office (IKS)
- 41 Department for the Transfer of Knowledge and Technology (AWiTT)
- 42 Medigate GmbH
- 43 Hamburger Informatik Technologiecenter e. V. (HiTeC)



INNOVATIVE COMPANIES (A SELECTION):

- 44 GALAB Laboratories GmbH
- 45 Aurubis AG
- 46 Garz & Fricke GmbH
- 47 Airbus Operations GmbH (anchor company)
- 48 Philips GmbH
- 49 Lufthansa Technik AG
- 50 Beiersdorf AG
- 51 Siemens AG
- 52 Kühne + Nagel (AG & Co.) KG (across various sites)
- 53 Hamburger Hafen und Logistik AG
- 54 Olympus Europa SE & Co. KG
- 55 Körber AG
- 56 Still GmbH
- 57 Jungheinrich AG
- 58 Eppendorf AG
- 59 Evotec AG



Bergedorf

THE HAMBURG INNOVATION PARKS

Altona

An ecosystem for research and development: Built around the Helmholtz-Center of the German Electron Synchrotron (DESY), the Innovation Park Altona is pursuing its development as an International Science Park in which basic research, applied research and their transfer to market-ready products all converge.

Over the past few years the Research Campus Bahrenfeld, in conjunction with the DESY, the Universität Hamburg and numerous other renowned scientific facilities like the X-Ray Free-Electron Laser research facility XFEL, has developed into a world-class hub for structural research. Furthermore the Universität Hamburg is considering moving the major part of its Faculty of Natural Sciences to Bahrenfeld. To use such enormous potential, plans are underway to build an innovation centre, two technology centres and provide other free space where innovative start-ups and companies will find room for development and networking. Thus the future innovation centre on the Research Campus will be open as an incubator for all the major themes of concern to the Research Campus as well as bringing together all the spin-off initiatives in the fields of development mentioned above and supporting them through to the ready for market stage. To this end flexible office space will

be provided along with co-working areas, seminar and meeting rooms and superbly equipped laboratories. Relocation opportunities in close proximity to the DESY will be granted to research-related companies while the Research Campus shall be further developed to meet the needs of the new science hub. As the anchor institution responsible, the DESY will drive forward connectivity between the new buildings and the Research Campus and the XFEL in a single ecosystem that links up research, teaching and innovation in an unprecedented manner.

TECHNOLOGY FOCUS:

LIFE SCIENCES, NANO-AND LASER TECHNOLOGIES, MATERIALS SCIENCES INCLUDING HIGHLY SPECIALISED INFRASTRUCTURES

LOCATION: Campus located in direct proximity to the DESY

ANCHOR INSTITUTIONS: DESY, XFEL, CFEL, CSSB, Fraunhofer IME-SP, EMBL, UHH, MPSD

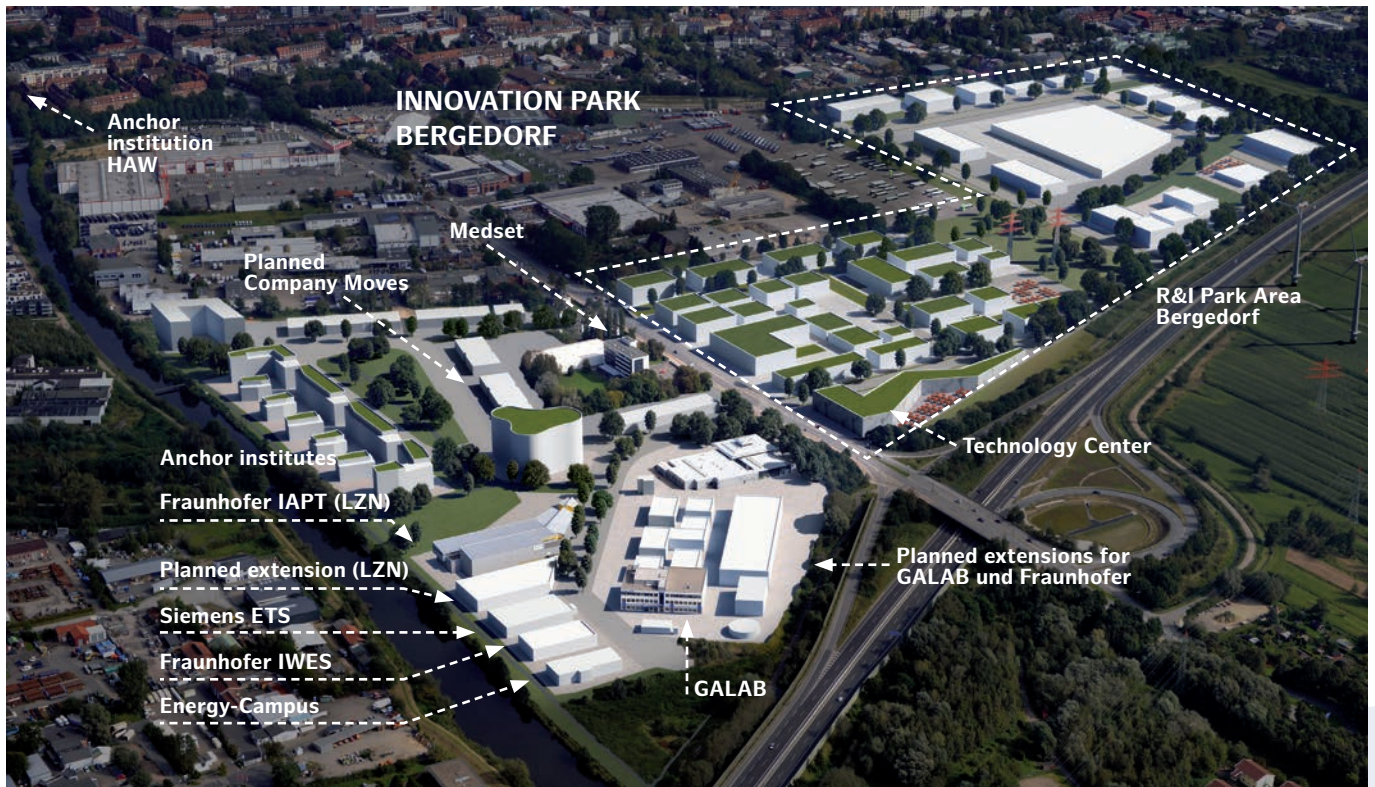
CONCEPT: Innovation Centre (DESY), technology centres, space for innovative projects

MARKETABLE AREA: 6 - 8 hectares

CONSTRUCTION START: 2nd quarter 2018

OWNERS: The Free and Hanseatic City of Hamburg, individual private owners





Bergedorf

Room for the future: The grounds of the Innovation Park Bergedorf are being developed with a long-term perspective in mind and are available to companies who fit the concept. The anchor institutions established there so far are the Hamburg University of Applied Sciences (HAW) with the Life Sciences Campus and the Energy Campus, the Fraunhofer Institute for Additive Production Technologies (IAPT) and the Testing Facility of the Fraunhofer Institute for Wind Energy Systems (IWES).

With numerous renowned scientific institutions already to its credit, Bergedorf has optimal conditions for establishing an innovation hub around Schleusengraben. The Fraunhofer Institute for Additive Production Technologies IAPT (formerly Laser Zentrum Nord) assists companies in migrating innovative optical technologies from research to industrial practice. The Energy Campus, which features a wind and smart grid laboratory, tests new concepts for energy storage systems. These two poles will be further extended by the testing facility for large-scale wind turbines of the Fraunhofer Institute for Wind Energy and Energy System Technology IWES, a facility that has no counterpart anywhere in the world, and the Application Center of the Fraunhofer Institute for Silicon Technology ISIT which is being planned for the site. In order to give the site sufficient reserves for future development and flexi-

bility, it is planned to open up a large R&I site adjoining the Schleusengraben including space for intelligent innovative logistics concepts (for instance, in the fields of 3D printing, intralogistics and distribution) with links to Fraunhofer IAPT or the Energy Campus. At the same time an incubator and technology centre are also planned which will function as bridges between the research institutes and companies wishing to relocate and which will provide the full range of needed services.

TECHNOLOGY FOCUS:

WIND ENERGY, 3D LASER TECHNOLOGY, ENERGY STORAGE SYSTEMS, OPTICAL TECHNOLOGIES AND GRIDS/GRID INTEGRATION

LOCATION: around the research institutes at Schleusengraben and bordering on Curslackner Neuen Deich to the east

ANCHOR INSTITUTIONS: HAW with Life Sciences Campus and Energy Campus, Fraunhofer IAPT (formerly Laser Zentrum Nord), Fraunhofer IWES (testing facility), Application Center. Power Electronics for Regenerative Energy Systems of Fraunhofer ISIT (in planning)

CONCEPT: incubator, technology centre, space for innovative projects

MARKETABLE AREA: approx. 20 hectares

CONSTRUCTION START: scheduled for 2021

OWNERS: The Free and Hanseatic City of Hamburg, private owners

Harburg

Urban flair and synergies: The Innovation Park situated in the bustling district of Harburg is characterised by its vibrant energy and by continuous growth in the fields of research and technology, due in part to private investors. Furthermore, the site also offers excellent conditions for the knowledge transfer between enterprise and universities – for instance through the technology transfer company TUTECH which is located there.

In Harburg companies both young and established can tap the competence of a broad range of scientific establishments. What's more, the scientific anchor institution, the Hamburg University of Technology, is also planning further chairs in the field of digitisation/engineering science while the Fraunhofer Center for Maritime Logistics and Services CML is planning to relocate to the channel hamburg. The knowledge and technology transfer company TUTECH Innovation GmbH of the TUHH also supports cooperation projects between science and industry. In the Innovation Campus Green Technologies (ICGT) it also provides knowledge-based start-ups with a state-of-the-art infrastructure, and in collaboration with the Startup Dock also assists business start-ups from the university and its immediate field. Various resi-

dential and hotel projects and initiatives by private investors are accelerating the development of Harburg into an area of innovation consisting of a number of superbly interconnected individual entities. Overall, the conditions for turning ideas into market-ready products are outstanding.

TECHNOLOGY FOCUS:

GREEN TECHNOLOGIES, AVIATION/MARITIME TECHNOLOGY, MEDICAL TECHNOLOGY TOGETHER WITH DIGITISATION AND MATERIALS SCIENCES

LOCATION: in the immediate vicinity of the TUHH (including channel hamburg, Schlachthofstraße, Am Radeland, Temporing)

ANCHOR INSTITUTIONS: TUHH, Fraunhofer CML, DLR

CONCEPT: incubators, technology centres, areas for innovative projects

MARKETABLE AREA: approx. 6 - 20 hectares

CONSTRUCTION START: expected in 2019

OWNERS: The Free and Hanseatic City of Hamburg, hit-Technopark, Hamburg Innovation Port, other private investors





Finkenwerder

High over the clouds yet very much on the ground: Already largely developed, the Innovation Park Finkenwerder is dominated by its research and development focus on aviation, with Airbus as its anchor institution, two DLR institutes and institutes of the Hamburg University of Technology.

The Center of Applied Aeronautical Research (ZAL TechCenter) acts both as an incubator and a technology centre. Together with Airbus it forms the core of the Innovation Park Finkenwerder with a focus on promoting the aviation industry in Hamburg and on strengthening cooperation with the German Aerospace Center (DLR). Here and under one roof is the possibility of research and development across the whole value chain of an aeroplane while joint use of the infrastructure and closeness to one another promote networking and cooperation. ZAL holds over 26,000 square meters of hangars as well as laboratory, office and research infrastructure space for research establishments, start-ups and established companies; an extension to the building is already in planning. Apart from the two newly established DLR institutes (for Maintenance, Repair and Overhaul,

and of System Architectures in Aeronautics), the Technology Center Hamburg Finkenwerder (THF), the two Airbus Technology Parks (ATP 1 and ATP 2) and the Airbus BizLab mean that a highly consolidated infrastructure is already solidly in place. Numerous other tenants from industry and science use and extend the rich number of local networking and cooperation opportunities so that space in the immediate vicinity is almost fully engaged.

TECHNOLOGY FOCUS: AVIATION

LOCATION: on the Rüschnhalbinsel in direct proximity to Airbus and its suppliers

ANCHOR INSTITUTIONS: Airbus, ZAL TechCenter, DLR, TUHH

CONCEPT: anchor companies and technology centres

MARKETABLE AREA: some limited leasable areas in ZAL

OWNERS: ZAL TechCenter, THF, Airbus, private operators

PRIVATE INNOVATION PARKS IN HAMBURG

The Health Innovation Port

The Health Innovation Port is a collaboration space in Hamburg-Fuhlsbüttel. Founded by Philips in association with the Techniker Krankenkasse, the Health Innovation Port is the first and up to present only co-working space of its kind with a clear focus on health. The Health Innovation Port brings together start-ups and the relevant players from the traditional health system. Its lively exchange of ideas with industry, science and the public sector makes the Health Innovation Port a platform of innovation which also supports young companies in realising their business ideas and in playing an active role to help shape the future of the healthcare sector. In order to ensure that these goals will be sustainable across the coming years, the Health Innovation Port offers start-ups in the health sector much more than "just" a workplace and a professional infrastructure. Whoever docks in the Health Innovation Port has access to an exclusive network of partners and experts covering a broad variety of different themes, and they can also count on the support of mentors who are all experts in their own branches. On top of this, the young entrepreneurs also have the opportunity to dialogue with a focused community and can gain inspiration from the rich array of event formats held in the Health Innovation Port.

www.healthinnovationport.de

The hit-Technopark

On more than 30,000 square meters of floor space, the hit-Technopark in the Innovation Park Harburg provides small and medium-sized technology-related companies with modern office and technical space. The companies making their home here are supported with expert advice on strategy planning, financing, project

development, project realisation etc. as well as with numerous networking opportunities with companies located in the Park, with the Hamburg University of Technology, and with first-class personal service. The buildings are specially equipped to meet the needs of tenants coming from the technology sector. Both the interior fittings and the IT infrastructure can be flexibly adapted to meet individual requirements. With its ecological concept "hit goes green" the hit-Technopark is playing a pioneering role in energy efficiency. Its buildings are situated in an appealing park landscape.

www.hit-technopark.de

The Hamburg Innovation Port

The Hamburg Innovation Port is being built in the Innovation Park Harburg, which means that it's in close proximity to the Hamburg University of Technology, the German Aerospace Center (DLR) and the Fraunhofer-Gesellschaft. Situated in the western part of the channel Hamburg, once complete this new hub for technology and innovation will offer gross floor space of 60,000 square meters for research institutes of the Technical University and both newly founded and established technology companies – in the form of development and office space, co-working space and conference and seminar zones. The establishment of the Hamburg Innovation Port marks yet a further step in the consolidation of networking between industry and science and the favouring of conditions for a strong and vibrant start-up scene. In terms of agenda, the Port will be focused on digital technologies with an orientation to the application fields of logistics, production technology, maritime technologies, medical engineering and aviation.

www.hamburg-innovation-port.com

Space for your Private Initiatives

Use the multiple opportunities the vibrant city of Hamburg has to offer and start your own project.



Why Hamburg?

EXCELLENCE AND STRENGTH

Hamburg is an excellent place for science with the greatest density of universities anywhere in Germany and a very strong place for industry with its own special "Business DNA".

TRADITIONAL AND INTERNATIONAL

As a port city, Hamburg has always had a decidedly international outlook and has always and continually reinvented itself. This is why in Hamburg tradition and innovation go hand in hand.

AN ATTRACTIVE PLACE TO LIVE AND WORK

Hamburg is one of the world's most attractive cities. Cultural diversity, its situation on the water, green spaces and a good education system mean a high quality of life. To keep it this way, policy-makers are working to create room for innovation.

CLOSELY NETWORKED

Hamburg offers superb networking between industry and science. This creates short direct ways and a rich and fertile soil for innovation.

"In places where science and industry meet, good ideas can turn into innovative products. The short distances between scientific institutions and innovative companies in Hamburg's Innovation Parks create the ideal conditions for this. That's why they are vital building blocks for raising the knowledge-based value chain in Hamburg."

DR. ROLF STRITTMATTER, **HAMBURG INVEST**

"Innovation is important for the future of Hamburg. So this is why we support business start-ups and existing firms to realise their innovations with comprehensive advisory services and attractive development opportunities – with grants, venture capital and low-interest loans."

MARTIN JUNG, **HAMBURGISCHE INVESTITIONS- UND FÖRDERBANK (IFB HAMBURG)**

"Hamburg has always been a city of commerce. But high up among the key wares of today and tomorrow are technologies and know-how. On the interface between research, markets and society, it's our job to ensure that this commerce goes smoothly without a hitch. Through the application of new findings from science we create sustainable values and help ideas to fly."

MARTIN MAHN, **HAMBURG INNOVATION GMBH (HI)**

"At the IKS we connect up industry and science through better communication between companies and scientific institutions, and facilitate mutual access. Ever since we were founded, we have advised more than 2,700 entrepreneurs and scientists about the opportunities cooperation can offer. And out of this, up to present, 380 projects have been born."

ALOIS KRITIL, **INNOVATION CONTACT OFFICE (IKS)**

"DESY is one of the world's most famous research centres which has set itself the task of decoding matter. To this end we deploy huge one-of-a-kind research engines which can make the nano-cosmos visible and tangible. With its staff of experts from 50 nations living in Hamburg, and the excellent research infrastructure, DESY offers an ecosystem that can give rise to innovation and support it."

DR. ARIK WILLNER, **GERMAN ELECTRON SYNCHROTRON (DESY)**



"The future of a place lies in research and innovation together with good cooperation between science and industry. Supported by attractive development measures, and in connection with our outstanding universities and research establishments, Hamburg's Innovation Parks are the ideal space in which new ideas and concepts can be developed, refined and translated into industrial practice."

KATHARINA FEGE BANK, DEPUTY MAYOR AND MINISTER FOR SCIENCE, RESEARCH AND EQUAL RIGHTS



"Hamburg is an innovative location with a strong business sector, excellent science institutions and a vibrant startup scene. With our innovation parks, we are developing a superb infrastructure for jointly working on forward-looking solutions. We are thus strengthening the innovation climate, while also creating valuable jobs."


DR MELANIE LEONHARD, MINISTER FOR ECONOMICS AND INNOVATION

Your contact for Hamburgs' Innovation Parks

HIW Hamburg Invest
Wirtschaftsförderungsgesellschaft mbH

Nina Alswede

 +49 (0)40 227019-35

 nina.alswede@hamburg-invest.com

IMPRINT

Published by:

The Ministry of Economics and Innovation (BWI)
Alter Steinweg 4, 20459 Hamburg

Concept, Editing, Design:
index Agentur GmbH

Photo Credits:

P. 1 www.mediaserver.hamburg.de/Andreas_Vallbracht

P. 2/3 www.mediaserver.hamburg.de/Michael_Zapf

P. 3/4 index Agentur GmbH

P. 5-8 Visualisations: FOTOFRIZZ aerial photography,
on3studio GmbH, clausen-seggelke stadtplaner,
Kosemund/Architektur

P. 10 www.mediaserver.hamburg.de/Andreas_Vallbracht

P. 11 www.mediaserver.hamburg.de/Christian_Spahrbier

P. 12 Bina Engel, www.mediaserver.hamburg.de/
Christian O. Bruch